

HEAD & TAILSTOCK WELDING POSITIONERS

SyncroLift®



PRICE LIST VALID UNTIL 31.12.2021

Model	Capacity	Standard model 400 V 50 Hz CE	Dual motorization model 400 V 50 Hz CE	Extra stroke for 2 columns		Teaching system mod. TCS
	kg	POA	POA	mm	POA	POA
SLC 20	2.000			500		
				750		
				1.000		
				1.500		
SLC 40	4.000			500		
				750		
				1.000		
				1.500		
SLC 50	5.000			500		
				750		
				1.000		
				1.500		
SLC 60	6.000			500		
				750		
				1.000		
				1.500		
SLC 100	10.000			500		
				750		
				1.000		
				1.500		
SLC 120	12.000			500		
				750		
				1.000		
				1.500		
SLC 150	15.000			500		
				750		
				1.000		
				1.500		
SLC 200	20.000			500		
				750		
				1.000		
				1.500		
SLC 250	25.000			500		
				750		
				1.000		
				1.500		
SLC 300	30.000			500		
				750		
				1.000		
				1.500		

STANDARD EQUIPMENT

1 fixed master column and 1 mobile slave column with hydraulic jack.

Perforated plates for fixing the workpiece and/or jig.

12,5 m long connection cable between columns (for pieces up to 8 m long).

Electric board and pushbutton panel with 6,50 m long connection cable.

5 m long power cable.

The columns are ready to be fixed on rails and wheels (rails and wheels are accessories upon request).

Painting: columns WHITE RAL 9003 – Plates and carter BLUE RAL 5015
Customized painting on request (surcharges may apply)

OPTIONAL



Hydraulic jack for master column



Rotary ground connector



Foot pedal for rotation control



Single/Double rail for columns translation



Translation wheel



Pushbutton panel cable



Connection cable between columns



Teaching system mod. TCS

OUR CODE	DESCRIPTION	POA		
MCSYN-MIT	Hydraulic jack for master column			
MCSYN-MASSA400	Rotary ground of 400 amp			
MCSYN-MASSA800	Rotary ground of 800 amp <i>(*See Technical notes - Note 2)</i>			
MCSYN-MASSA1200	Rotary ground of 1.200 amp <i>(*See Technical notes - Note 2)</i>			
MCSYN-MASSA1600	Rotary ground of 1.600 amp <i>(*See Technical notes - Note 2)</i>			
MCPEDALIERA-S	Foot pedal for rotation control			
MCSYN-BINARIO2M-S	2 m single rail with n° 2 wheels <i>(*See Technical notes - Note 3)</i>			
MCSYN-BINARIO2M-D	2 m double rail with n° 2 wheels <i>(*See Technical notes - Note 3)</i>			
	Extra single rail of 2 m <i>(*See Technical notes - Note 3)</i>			
	Extra double rail of 2 m <i>(*See Technical notes - Note 3)</i>			
	Replacing wheels (n° 2)			
MCSYN-CAVPULS-EXT	Extra pushbutton panel cable + 3,50 m (Max cable length: 10 m)			
	Extra pushbutton panel cable + 6 m (Max cable length: 12,50 m)			
MCSYN-CAVINT-EXT	Connection cable between columns A) Extra of + 2,50 m; B) Entire cable of 15 m.	Standard model	A)	B)
		Dual motorization model	A)	B)
	Connection cable between columns A) Extra of + 7,50 m; B) Entire cable of 20 m.	Standard model	A)	B)
		Dual motorization model	A)	B)
	Connection cable between columns A) Extra of 12,50 m; B) Entire cable of 25 m.	Standard model	A)	B)
		Dual motorization model	A)	B)
	Wireless pushbutton panel (included rotating beacon with alarm)			
	Double pushbutton			
	Wireless connection between columns			
	Laser Scanner mod. S300 Standard (programming excluded)			
	Customized perforated plates for fixing the workpiece and/or jig		Upon request	
	Tailstock with motorized length adjustment		15.000	
	Special track for motorized length adjustment of the tailstock		600/mt.	

SALES CONDITIONS

Delivery time: Please always check with us the best delivery for the positioner you need;

Delivery terms: EXW Sideros Machinery Srl, Via U. Foscolo 16/18, I Casoni, 29027 Podenzano, Italy (Incoterms 2020).
DAP/DDP shipments available on request.

Packing: price includes sea freight packing (barrier bag, salts) and wooden crate.

On-site installation: not included but can be quoted separately case by case.

Payment: by bank transfer, 50% deposit at order, 50% before shipment.
Different payment conditions may be discussed case by case.

Warranty: 12 months on all of our machines starting from the date indicated on the delivery note.

TECHNICAL NOTES

Note 1: The SLC 20 model dual motorization can't be equipped with any rotary ground.

Note 2: The SLC 20 model can be equipped on the slave column with just one rotary ground of 400 Amp.

Note 3: Rails must be anchored on the ground. Anchors are not included.

Min. length of single rail: 2 m.

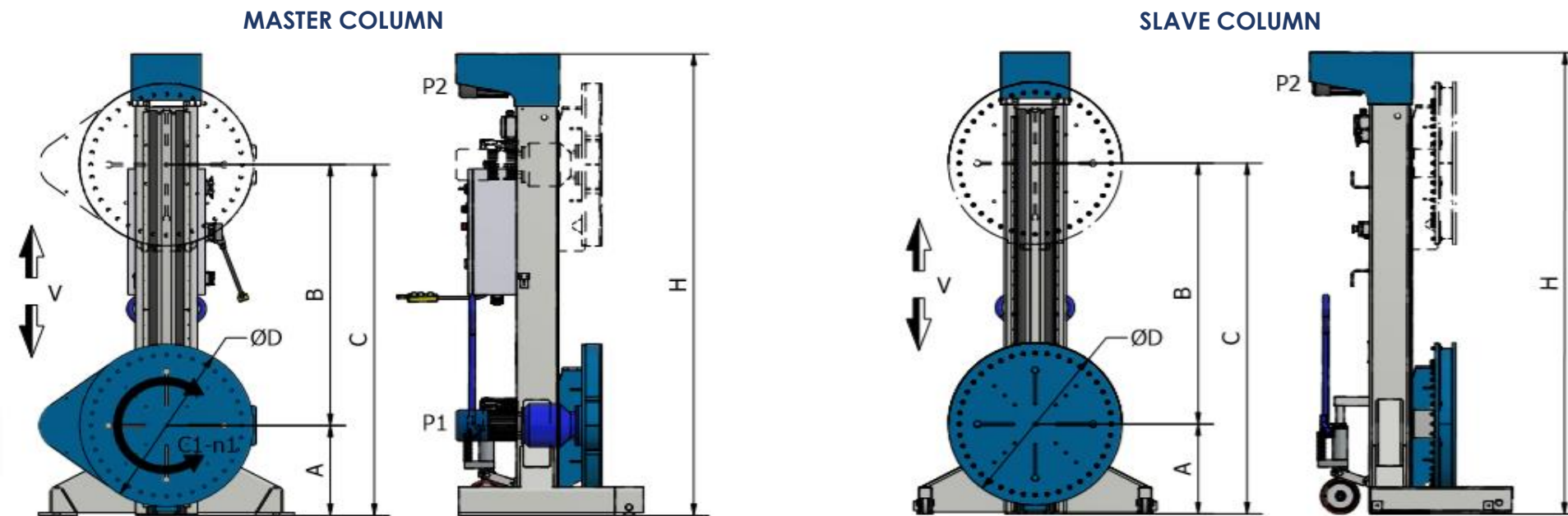
Max. length of the connection cable between columns: 25 m (standard length included: 12,5 m).

Max. length of the pushbutton panel cable: 12,5 m (standard length included: 6,5 m).

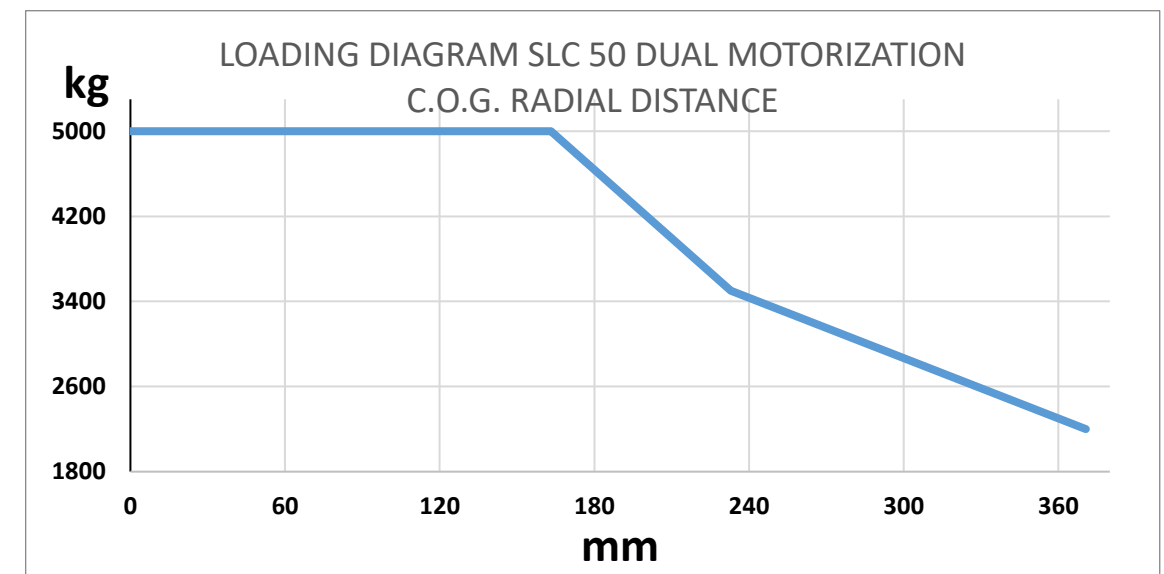
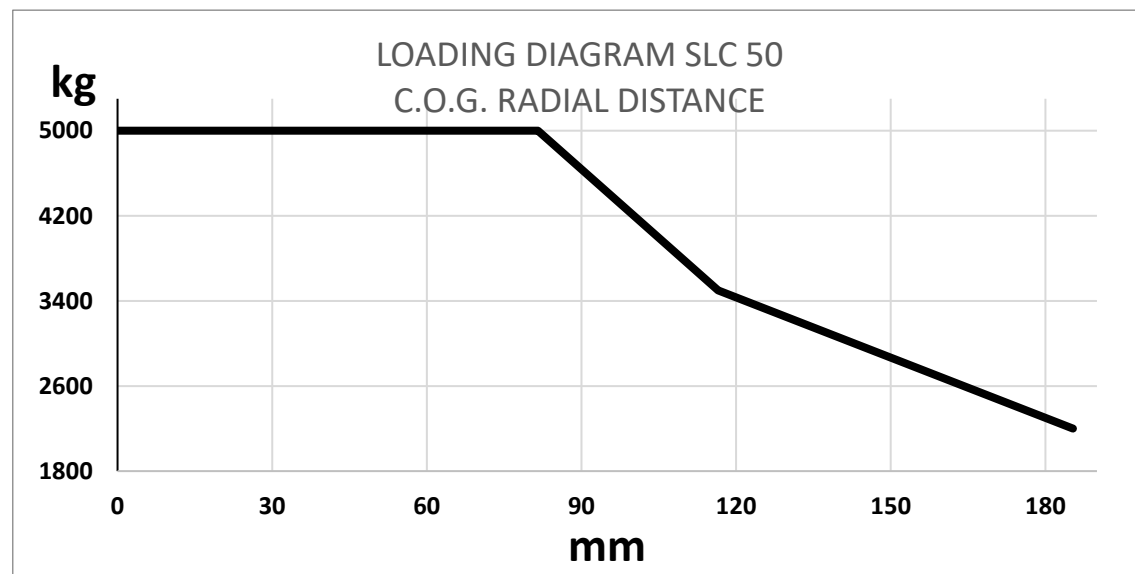
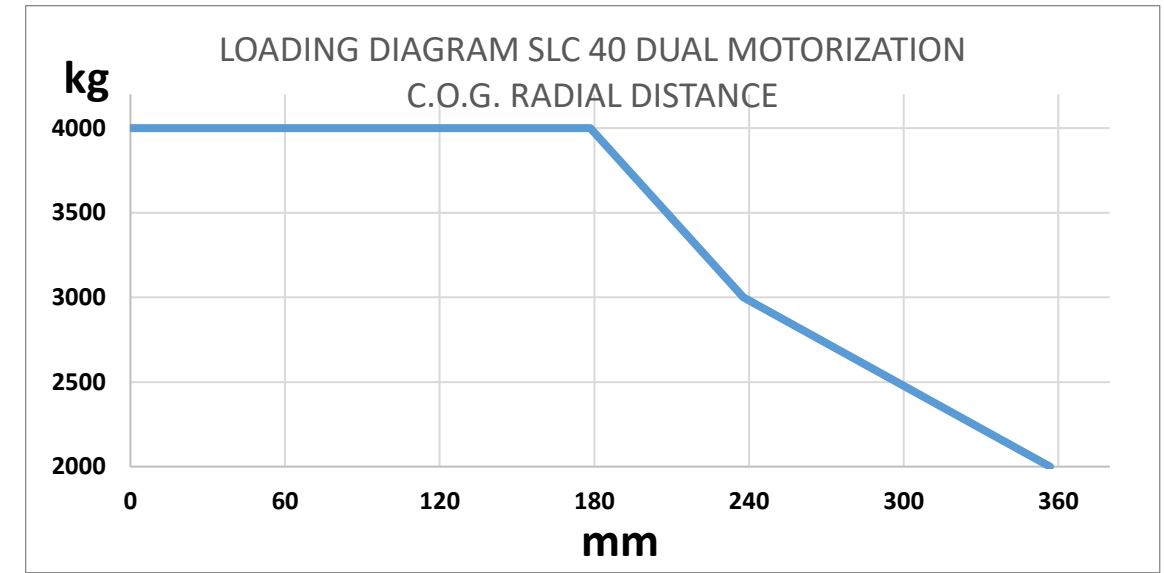
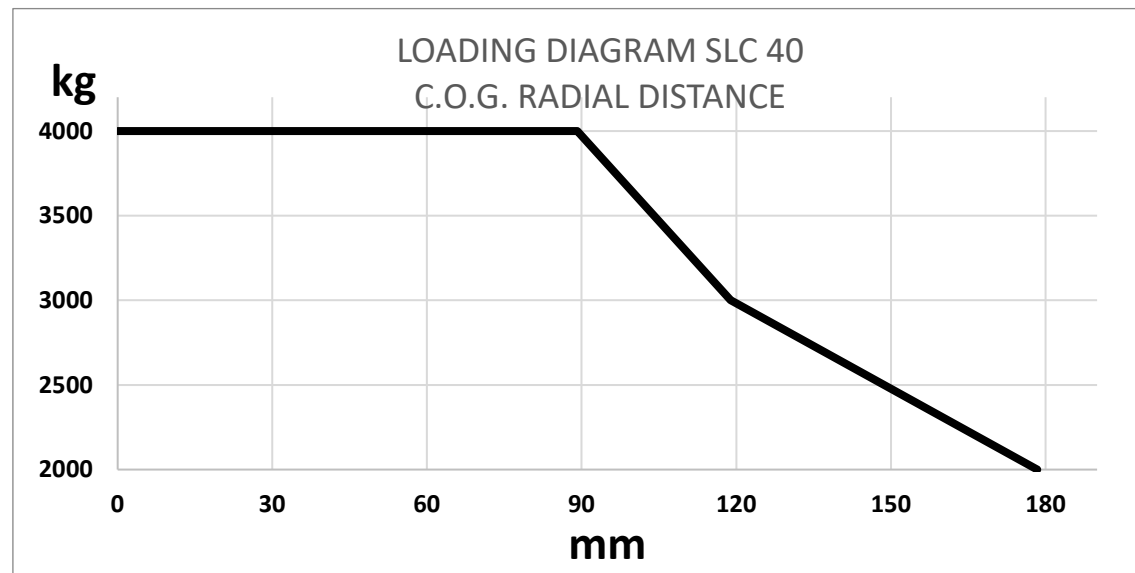
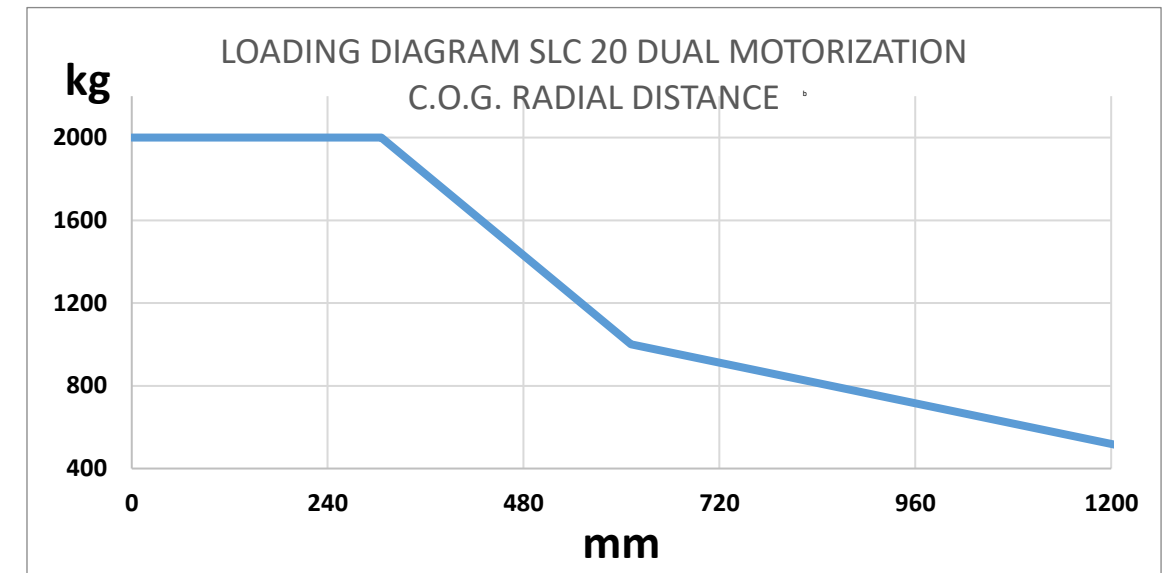
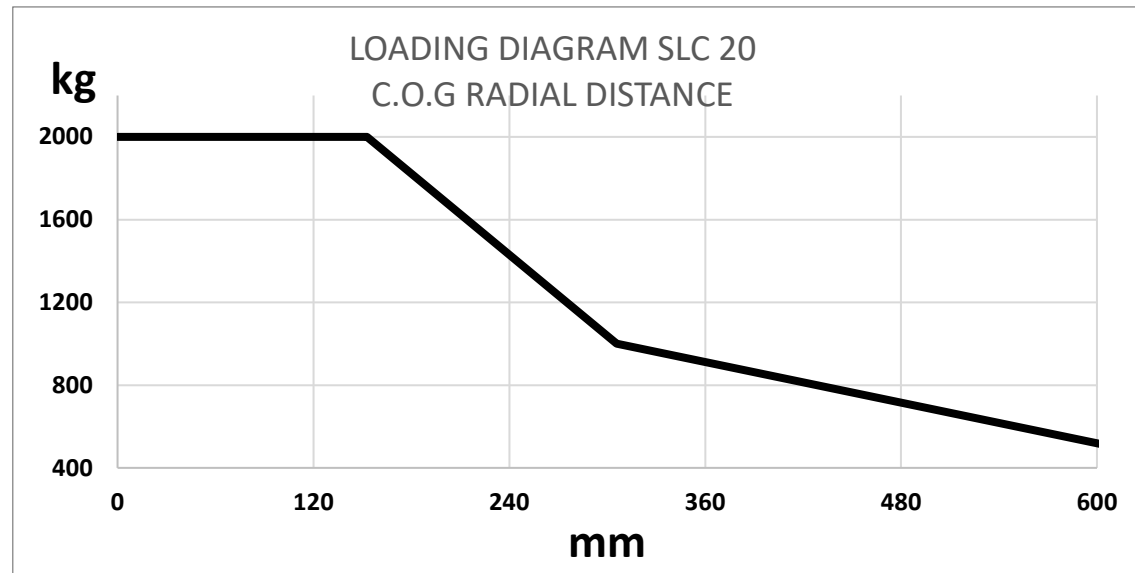
The master column must be anchored on the ground. Anchors are included.

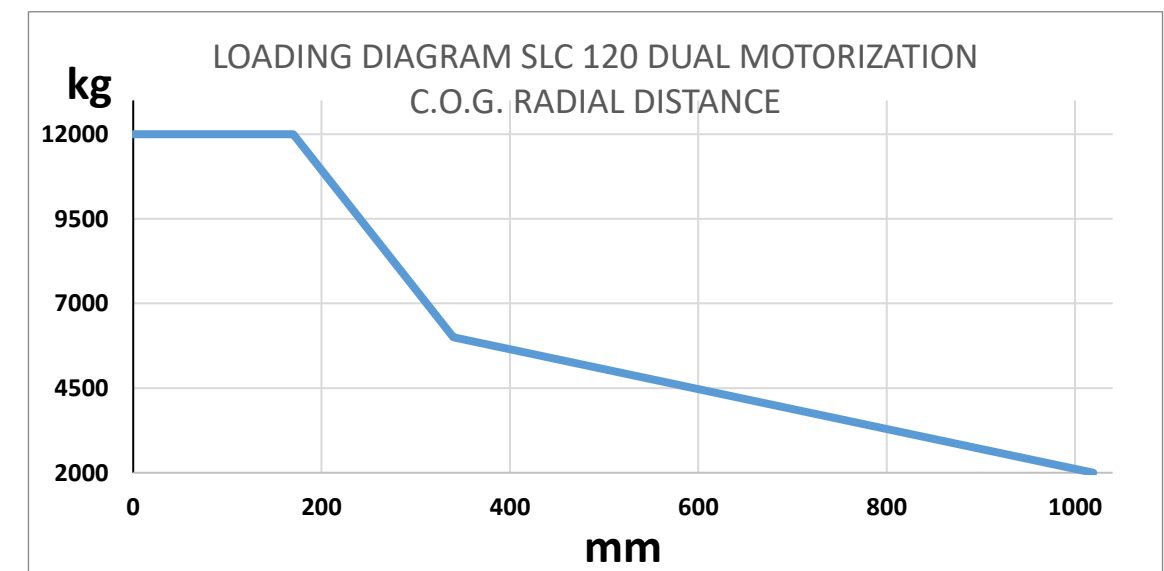
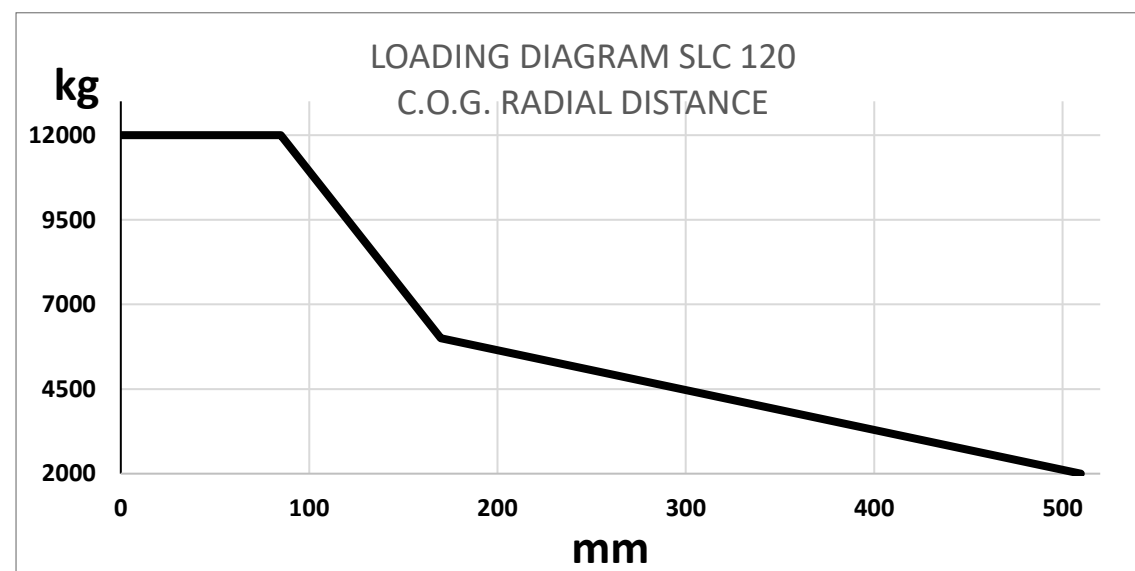
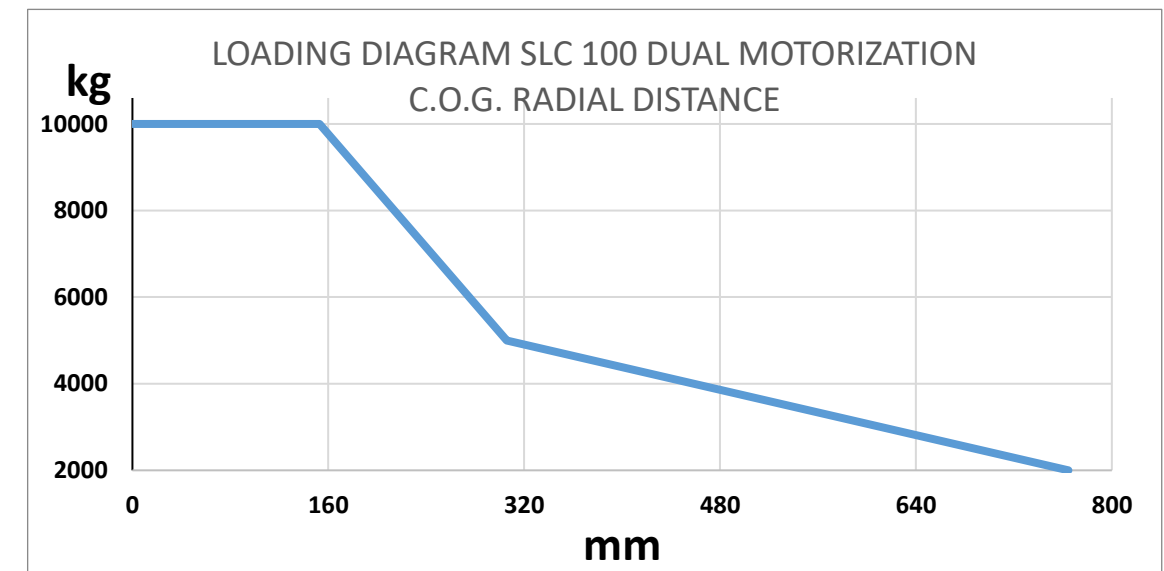
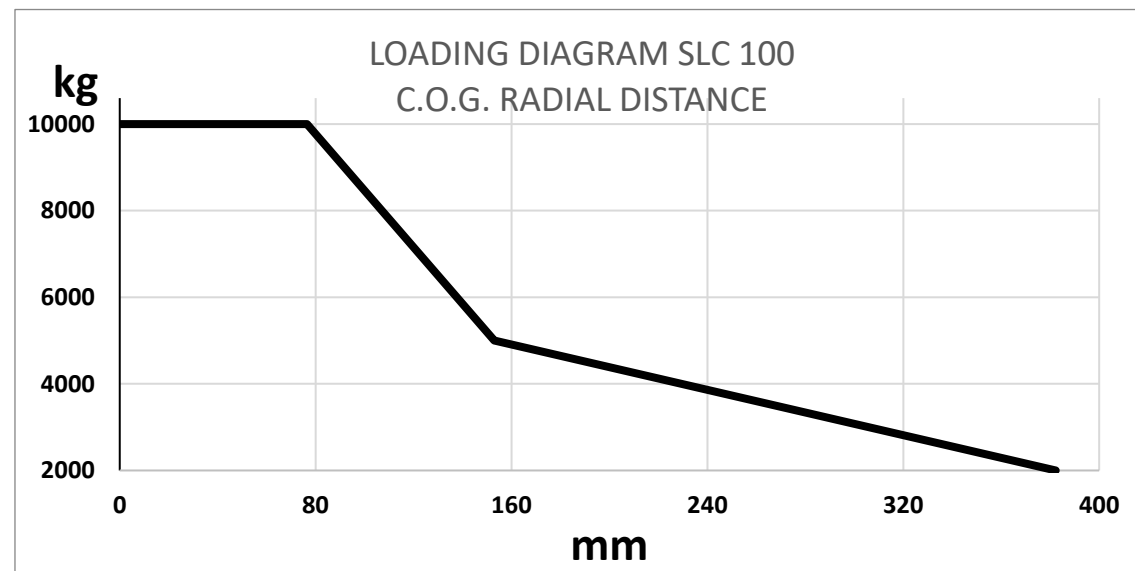
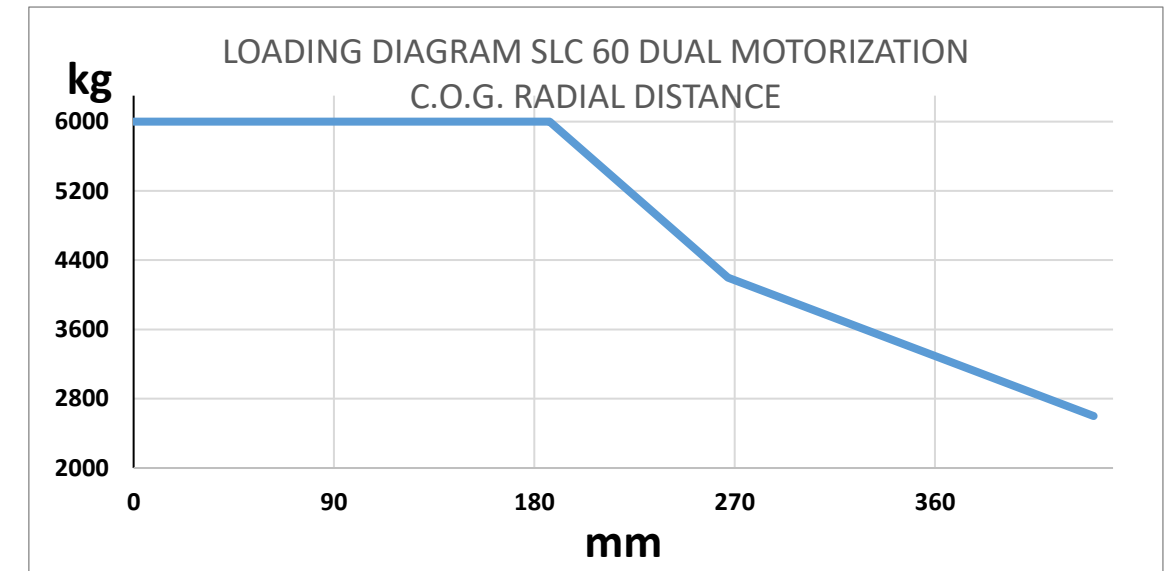
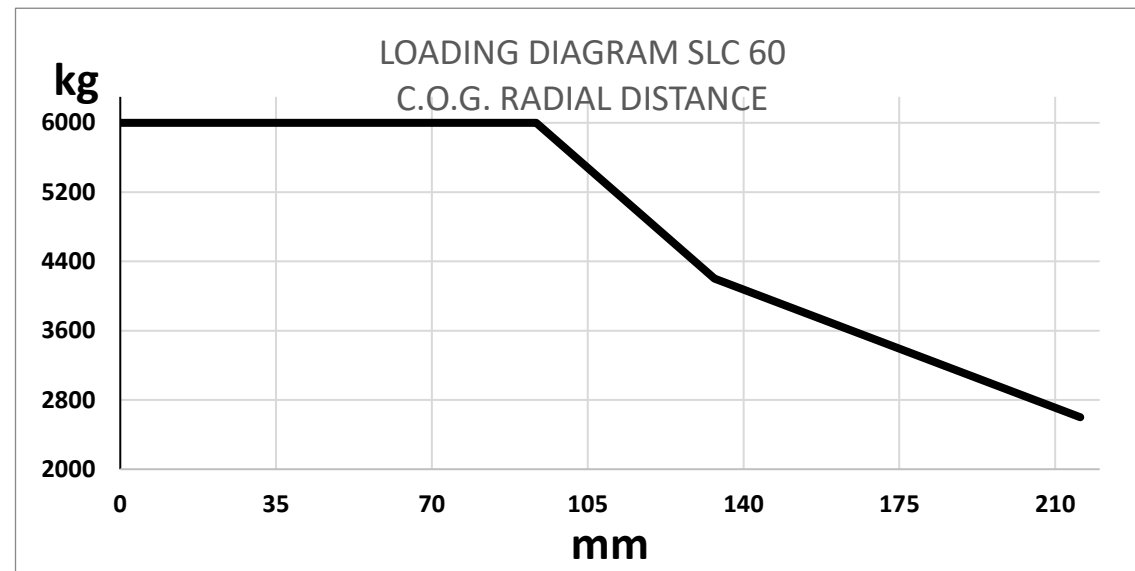
TECHNICAL DETAILS

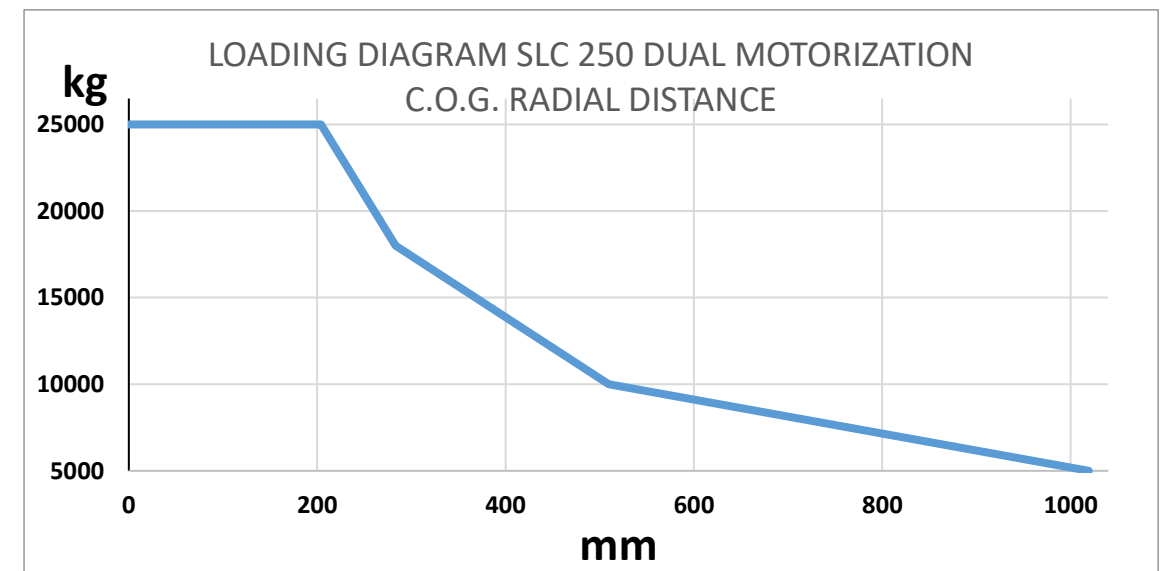
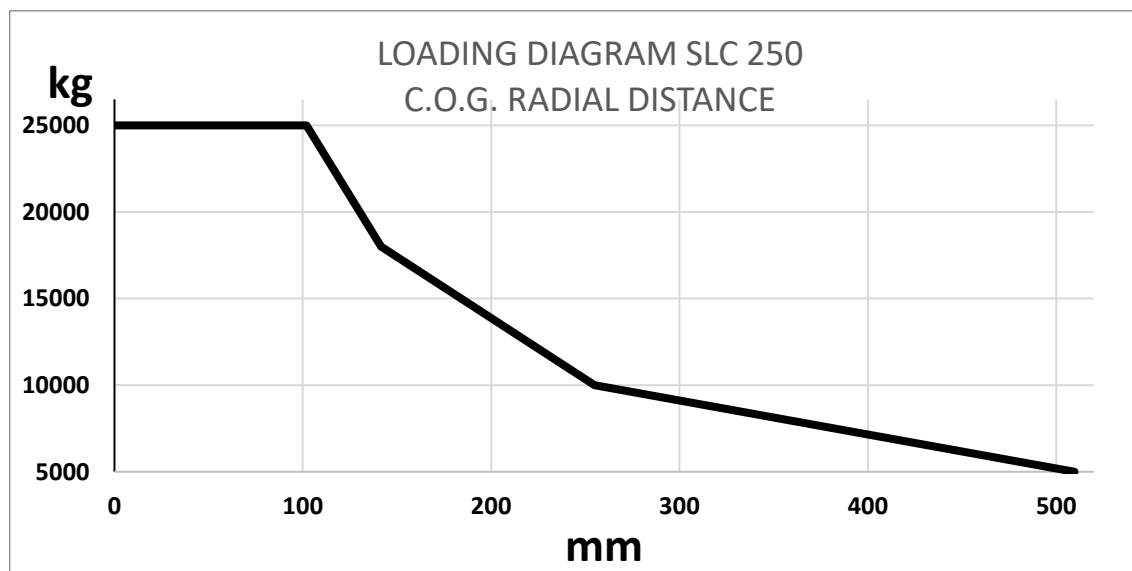
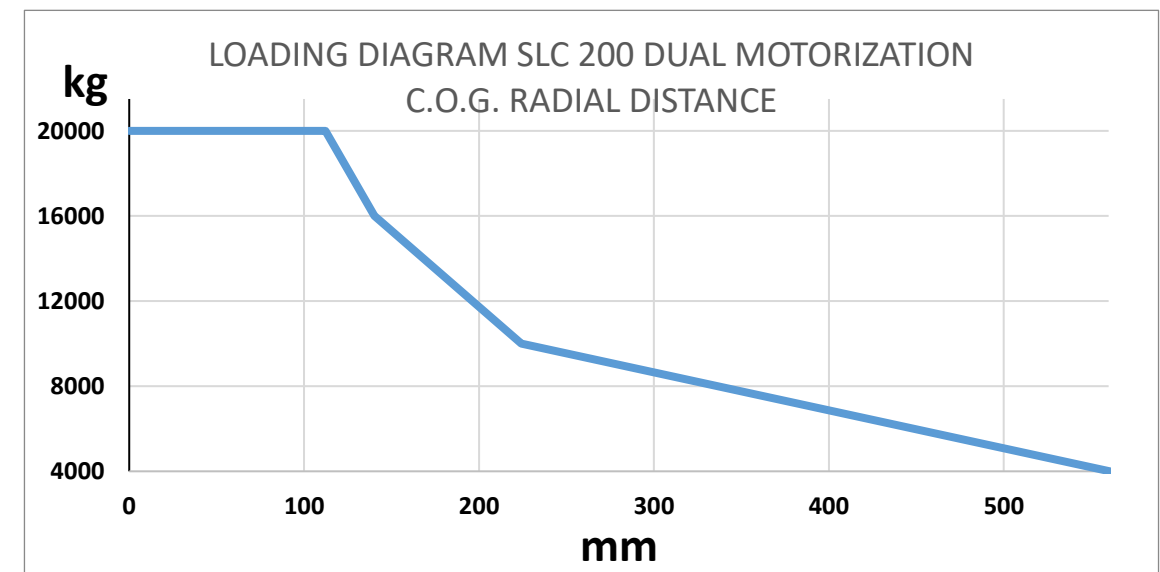
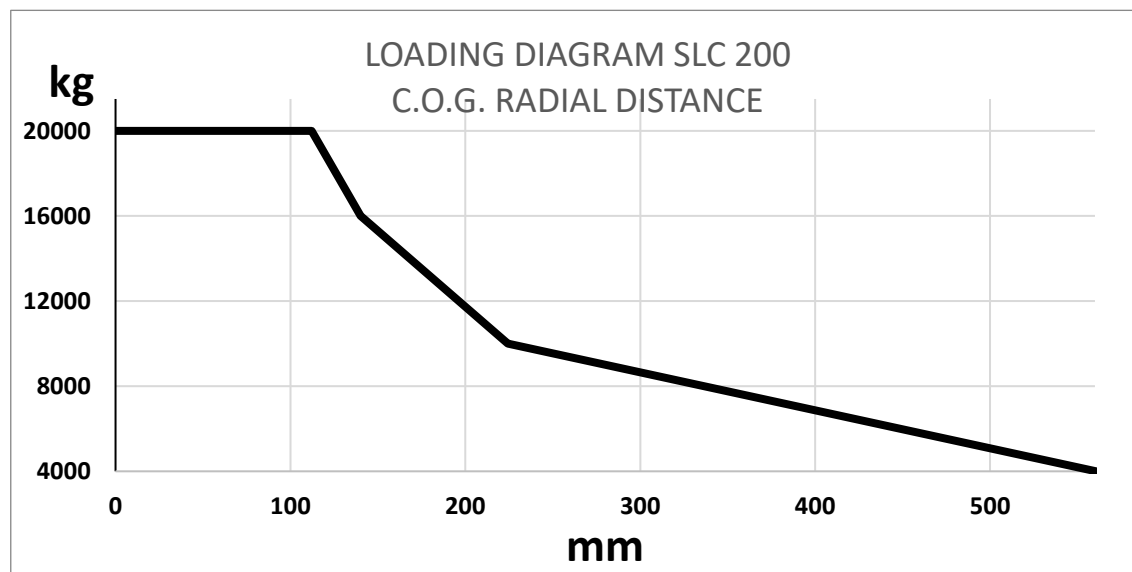
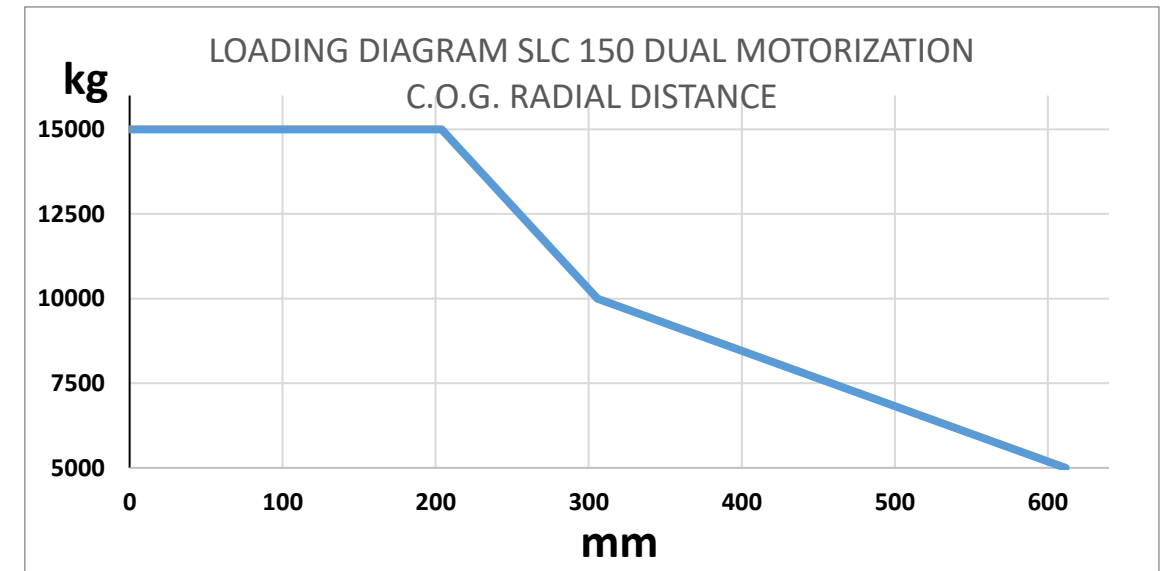
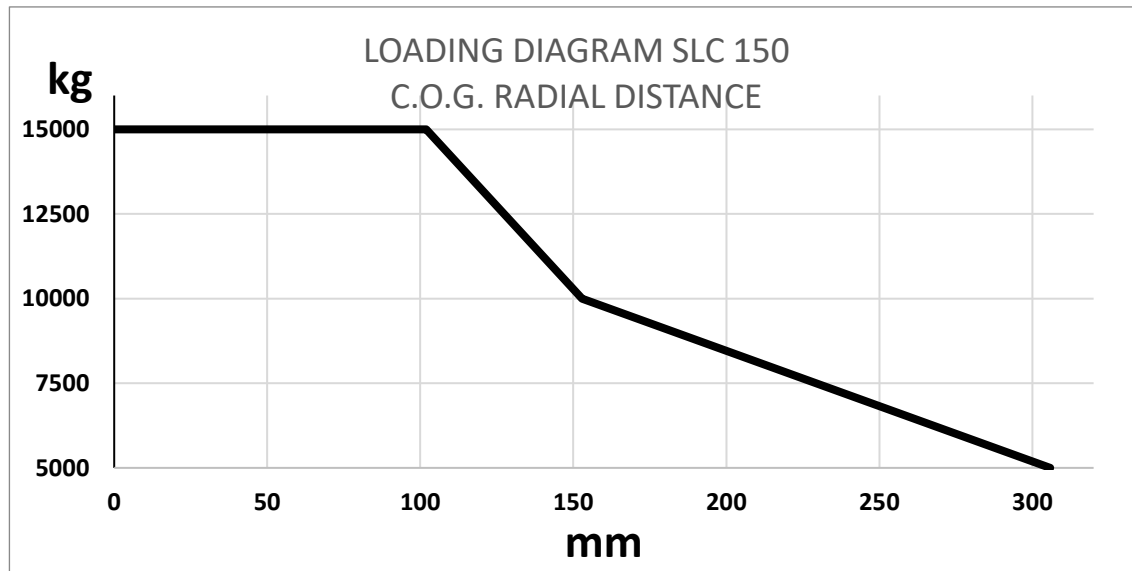
Model	Loading capacity	Max. torque standard/ dual motor. model	Max. plate rotation speed	Lifting speed	Min. height	Vertical stroke	Max. height	Plate diameter	Columns height	Master column weight	Master column with hydraulic jack weight	Slave column weight	Rotation motor power	Lifting motor power	Footprint	
	[kg]	C1 [N·m]	n1 [rpm]	V [mm/min]	A [mm]	B [mm]	C [mm]	ØD [mm]	H [mm]	[kg]	[kg]	[kg]	P1 [kW]	P2 [nr. columns x kW]	Master column [mm]	Slave column [mm]
SLC 20	2.000	3.000/ 6.000	1	560	350	1450	1800	600	2500	602	637	447	0,75	2 x 1,85	850x1250	1050x1250
SLC 40	4.000	3.500/ 7.000	1	560	350	1550	1900	600	2500	519	554	490	0,55	2 x 1,85	850x1250	1050x1250
SLC 50	5.000	4.000/ 8.000	0,9	560	400	1550	1950	750	2500	580	616	550	0,55	2 x 1,85	850x1250	1050x1250
SLC 60	6.000	5.500/ 11.000	0,75	560	450	1500	1950	800	2500	615	651	569	0,55	2 x 1,85	850x1250	1050x1250
SLC 100	10.000	7.500/ 15.000	1,1	650	500	1450	1950	900	2600	796	830	712	1,1	2 x 2,2	850x1350	1050x1250
SLC 120	12.000	10.000/ 20.000	1,1	650	550	1400	1950	1000	2600	852	885	770	1,5	2 x 3	850x1350	1050x1250
SLC 150	15.000	15.000/ 30.000	1,3	650	550	1450	2000	1000	2700	964	1000	880	2,2	2 x 3	1150x1250	1100x1150
SLC 200	20.000	22.000/ 44.000	0,9	560	550	1300	1850	1000	3100	1200	===	1100	2,2	2 x 3,7	1150x1250	1100x1150
SLC 250	25.000	25.000/ 50.000	0,9	470	700	1150	1850	1300	3100	1300	===	1200	3	2 x 4	1550x1600	1350x1600
SLC 300	30.000	35.000/ 70.000	0,75	290	750	1250	2000	1450	3300	1400	===	1300	3	2 x 4	1550x1600	1350x1600

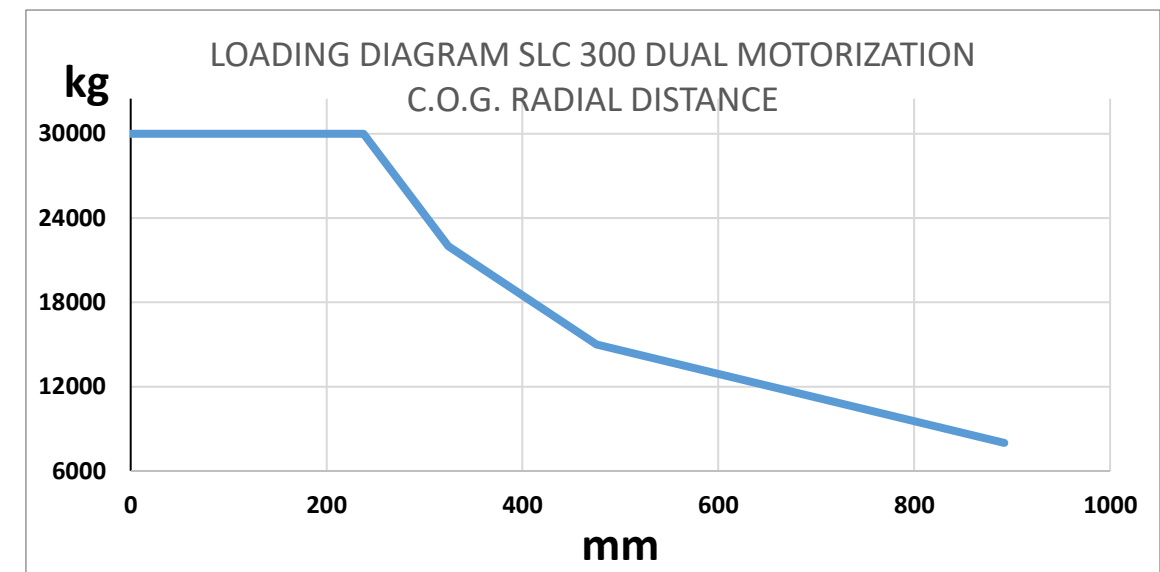
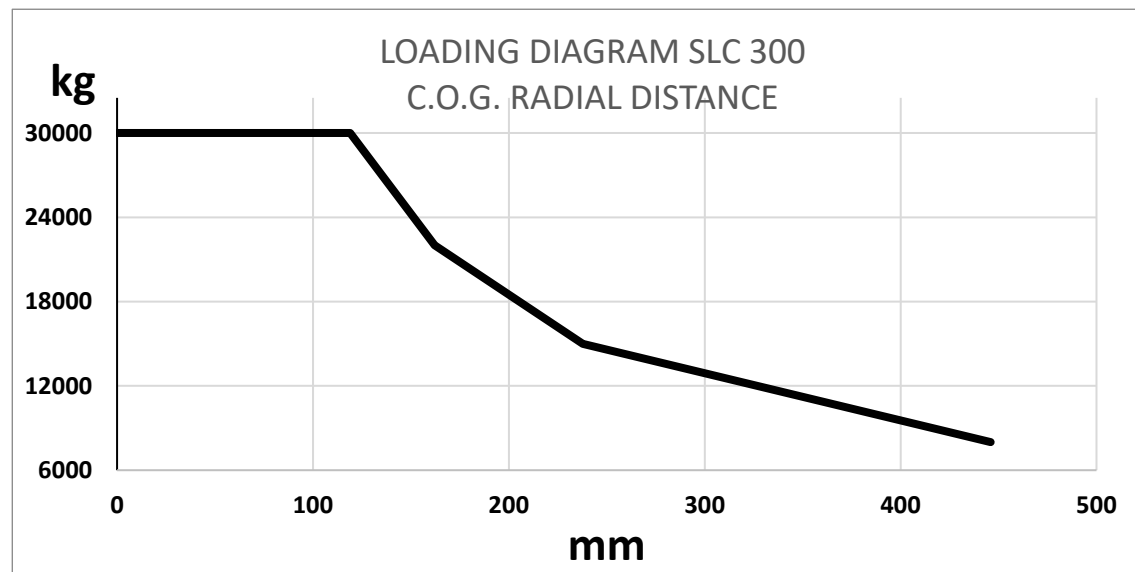


The dimensional data in the table are for standard configuration with fixed master column and mobile slave column.









Every information can be modified by Sideros Machinery without prior notice.



SincroLift®

SLC 400 (40.000 kg load capacity)
SLC 600 (60.000 kg load capacity)

On Customer's request, Sideros Machinery can realize head and tailstock positioner for major loading capacities.



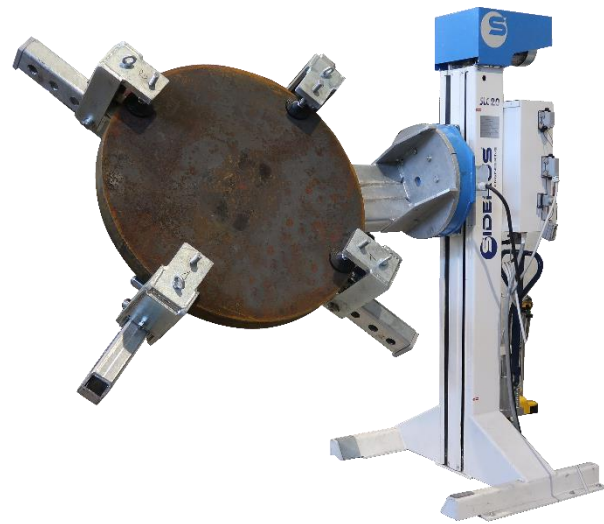
SincroLift® cradle

The *SincroLift cradle* positioner is composed of two fixed columns, a main cradle and of a motorized rotary plate on which is loaded the piece. The positioner performs three main movements: upward/downward, clockwise and counterclockwise 360° rotation and turning over. Each machine can be customized in height, length of the cradle and in loading capacity up to 20.000 kg.



SincroLift® skyhook

The *SincroLift skyhook* positioner represents the newest product developed by Sideros' R&D, as it is an evolution of the standard head and tailstock positioners. It performs an optimum ergonomics for welding and assembly processes, thanks to the possibility to turn the working piece by 180°. The positioner is composed of a fixed and a rotating arm, performing three main movements. Entirely customizable, it may reach load capacities of 10.000 kg.



SyncroLift[®] mono

The *SyncroLift mono* positioner, is composed of just the motorized column. The positioner performs all the main movements carried out by a standard head and tailstock positioner.



UniBalance[®]

The *Unibalance* positioner allows the manual rotation of the workpieces bringing them into any positions in the space improving the ergonomcy of the operator. The rotation is performed rapidly and safely once reached the center of gravity. The equipment has no engine, nor command or control systems and it is available in two sizes (300 or 1200 kg).



ScissorLift[®]

The *Scissorlift* positioner is a welding and assembly scissor lift table with a rotary plate. The plate can turn 360° clockwise and counterclockwise, and the machine has an integrated hydraulic power unit to minimize the floor space. The heavy-duty design allows perfect durability and reliability over time, yet guaranteeing perfect ergonomics and flexibility during all movements.